

## Within 25 miles of Biddulph:



### **LITTLE MORETON HALL** **Moreton, Congleton, CW12 4SD**

6.4 miles from Biddulph. A National Trust owned timber-framed fully restored 16<sup>th</sup> Century Tudor house open to the public from April to December each year. Free guided tours and people in Tudor dress. Phone: 01260 272018



### **LEEK & RUDYARD RAILWAY** **The Station, Rudyard, Leek ST13 8PF**

7.4 miles from Biddulph. The railway provides a 3 mile return trip alongside Rudyard Lake, with a Visitor Centre, boat hire, and angling available. Platform 2 café is open on most operating days. Phone: 07734 022164



### **EMMA BRIDGEWATER FACTORY** **Lichfield Street, Hanley ST1 3EJ**

7.7 miles from Biddulph. Stoke-on-Trent has been shaped by its production of pottery. Here's just one of many attractions to visit - join a factory tour, decorate your own piece of pottery or shop in the gift shop. Phone: 01782 210565



### **TITTESWORTH WATER & THE ROACHES** **Meerbrook, Leek ST13 8SW**

11.2 miles from Biddulph. Near Leek on the edge of the Peak District with a play area, walks, café and views of The Roaches – a gritstone ridge popular with hikers, rock climbers and freerunners. The water sports centre offers canoeing, kayaking, and paddleboarding.



## Within 25 miles of Biddulph:



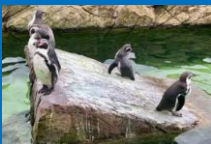
### **THE TRENTHAM ESTATE** **Stone Road, Trentham ST4 8JG**

13.3 miles from Biddulph. Home to Trentham Gardens; Trentham Monkey Forest; Trentham Treetop Adventures – a high-rope experience and Trentham Shopping Village – a garden centre and over 80 shops and eateries.



### **PEAK WILDLIFE PARK** **Winkhill, Leek ST13 7QR**

16.5 miles from Biddulph. A unique and immersive animal experience. Large walkthroughs allow you to come face to face with exotic and endangered animals from across three continents. Phone: 01538 308880



### **ALTON TOWERS RESORT** **Farley Lane, Alton ST10 4DB**

22.1 miles from Biddulph. A theme park and resort complex. Merlin Entertainments operate a theme park, with rides for all ages, a tropical indoor water park, spa, mini golf and hotel. Phone: 01538 704096

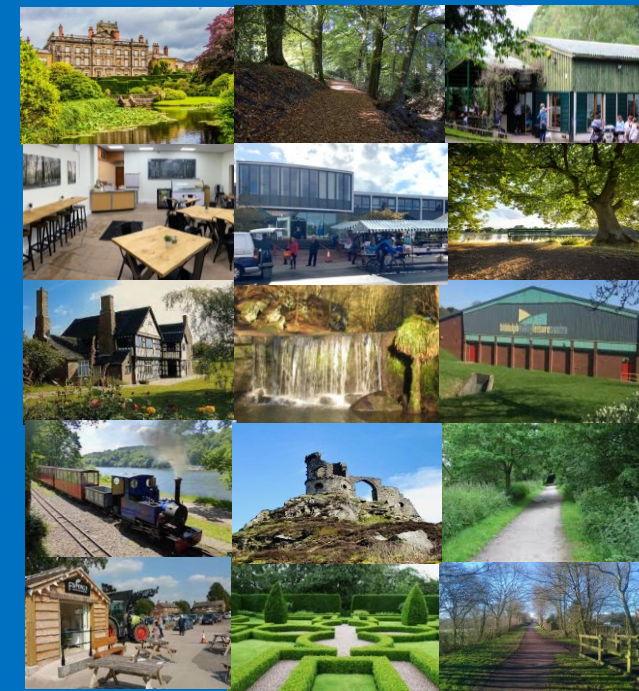


We've taken care to ensure the accuracy of this information, no responsibility can be accepted for errors or omissions. If you feel some information is incorrect or details have changed, please let us know.

**Biddulph Town Council**  
**Biddulph Town Hall, High Street, Biddulph**  
**Staffordshire Moorlands. ST8 6AR**  
Tel: 01782 498480  
Email: [office@biddulph-tc.gov.uk](mailto:office@biddulph-tc.gov.uk)  
Website URL: [www.biddulph.co.uk](http://www.biddulph.co.uk)



# EXPLORE BIDDULPH



## PLACES TO VISIT IN BIDDULPH AND THE SURROUNDING AREA

## Within the Biddulph District:



### **BIDDULPH GRANGE GARDEN** Grange Road, Biddulph ST8 7SD

A National Trust owned quirky Victorian garden, created by James Bateman for his collection of plants from around the world. Divided into a series of theme gardens, including a Chinese temple, Egyptian court and a Himalayan glen. Phone: 01782 517999



### **BIDDULPH GRANGE COUNTRY PARK** Grange Road, Biddulph ST8 7TZ

Originally part of James Bateman's Grange estate, with way marked trails, fishing (fishing day tickets available) and walks. Some easy paths (with wheelchair and pushchair access), others more difficult including steep climbs.



### **THE HIDEAWAY, BIDDULPH GRANGE COUNTRY PARK, Biddulph ST8 7SD**

The management of the Visitor Centre was taken over by Biddulph Town Council in August 2020, with 'The Hideaway' café, coffee shop and ice cream shop launched on 28 August 2021 after a full refurbishment. Open weekends and bank holidays 10am-4pm. Dogs welcome.



### **BIDDULPH VALLEY WAY**

Part of the National Cycle Network (Route 55), this traffic free trail can be explored on foot, cycle or horseback. The Way has interesting features, such as small copses, hedgerows and ditches which encourage a wild range of wildlife, with views to the Peak District, Congleton Edge, Mow Cop and the Pennines.



## Within the Biddulph District:



### **GREENWAY BANK COUNTRY PARK** Knypersley, ST8 7QX

Originally part of the landscaped grounds of Knypersley Hall, with woodland waterside walks around the Serpentine Lake and Knypersley Reservoir. See the Warder's Tower built in 1828 and the mysterious Gawton's Well (a natural spring). Play area and free car parking.



### **BIDDULPH VALLEY LEISURE CENTRE** Thames Drive, Biddulph ST8 7HL

Leisure centre located in the heart of Biddulph offering a 25m swimming pool, 53 station gym, sports hall, group fitness studio and spinning studio. Phone Number: 01782 515005



### **HALLS ROAD PLAYING FIELDS** Halls Road, Biddulph ST8 6DD

Area of open grassland with a children's play area, multi use games area, football pitches, tennis courts, outdoor gym equipment and surfaced circular path, providing easy access around the site and onto the wider footpath network.



### **The Biddulph Ramblers**

Guided walks – programme available on their website:  
<https://www.biddulphramblers.org.uk>

### **Biddulph Town Centre**

See our separate leaflet listing shops and businesses trading from Biddulph Town Centre.

## Within 10 miles of Biddulph:



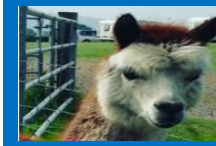
### **MOW COP CASTLE** High Street, Mow Cop ST7 3PA

2.7 miles from Biddulph. A Grade II listed National Trust owned folly with 360 degree views of the Staffordshire Moorlands and the Cheshire Plain. It was the location for the first Primitive Methodist service in 1807. There is a small car park but no facilities.



### **GLEBE FARM** Peel Lane, Astbury CW12 4RQ

4.1 miles from Biddulph. Coffee shop, farm shop, butcher's, fishmongers and independent shops, together with alpacas, donkeys, ponies, goats and more. Free entry and free parking. Children's play area. Phone: 01260 273916



### **ASTBURY MERE COUNTRY PARK** Sandy Lane, Congleton CW12 4FP

5.1 miles from Biddulph. Lake and open area in West Heath, a suburb of Congleton. 2 mile long walks with views towards Congleton Edge and Mow Cop. Used for fishing and water sports. Toilets available at the Visitor Centre.



### **FORD GREEN HALL** Ford Green Road, Smallthorne ST6 1NG

5.3 miles from Biddulph. A timber-framed farmhouse built in 1624, offering an insight into the 17<sup>th</sup> Century. The rooms are furnished with textiles, ceramics and furniture. Open throughout the year. There's a small tearoom and gift shop. Phone: 01782 537696

