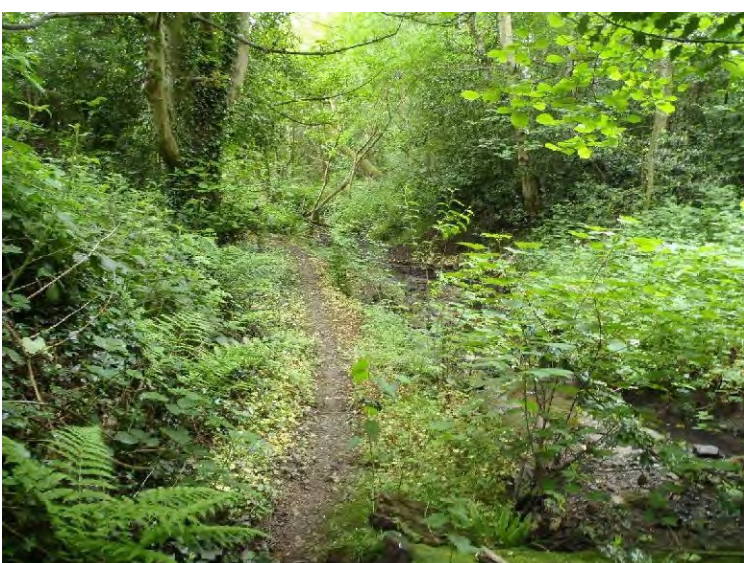


9.

Site	VOS 16: Thames Drive Woodland
Grid Reference / Post Code	53°07'10.9"N 2°09'54.7"W ST8 7SX
Brief Description	Unmanaged mature woodland belt with watercourses, glades, public right of way, and informal path network through southern section.

Criteria.		
Location <i>In reasonably close proximity to the community it serves</i>	√	Forms a ribbon of woodland between development
Local Significance <i>Demonstrably special to a local community and holds a particular local significance, for example because of its beauty, historic significance, recreational value (including as a playing field), tranquility or richness of its wildlife.</i>	√	Rich in wildlife, even in areas with no obvious public access. Recreation value on large area with formal and informal paths.
Size, Scale <i>Local in character and is not an extensive tract of land.</i>	√	The size of a cricket pitch.
Recommendation		Existing Local Green Space Designation within the Local Plan

Picture:



Map:

