

21. ADDITIONAL INFORMATION ADDED

Site	Corner at junction between Torville Drive and Ribble Drive, maintained by Ribble Drive residents
Grid Reference / Post Code	ST8 7LL
Brief Description	A rectangular space that is open grass with trees and shrubs from the corner to approximately half way along the Torville side, when it then tapers and drops steeply down to the culvert that starts in the rear garden of No. 17 Plover Drive and continues under this space and down to Biddulph Brook at the Leisure Centre, moving water coming off the hillside up to Biddulph Moor.

Criteria.		
Location <i>In reasonably close proximity to the community it serves</i>	√	Bounded by No 10 Ribble Drive, the drop down to the culvert, the beginning of Torville Drive and the start of Ribble Drive's 'dog-leg' cul-de-sac with the two bungalows there directly facing the open grassed area.
Local Significance <i>Demonstrably special to a local community and holds a particular local significance, for example because of its beauty, historic significance, recreational value (including as a playing field), tranquility or richness of its wildlife.</i>	√	<p>Green space recreational area for the resident's children.</p> <p>The grass and shrubs at the open area are maintained by Ribble Drive's residents, to retain its attractiveness and community use, while retaining its natural environment and wildlife habitats.</p> <p>The steep drop down to the culvert is heavily overgrown providing wildlife habitats. Its boundary edge with Torville Drive has wide spread and thriving blackberry hedgerow extending back into that area and supporting wildlife, as well as fruit picking by residents along the roadway edge.</p> <p>The joint maintenance and use contributes to the social and community cohesion of Ribble Drive.</p> <p>In addition to being a recreational area, the open space is used by the resident's children for such as displaying Well Dressing, signposting / hosting charity activities and assisting their school nature projects.</p>
Size, Scale <i>Local in character and is not an extensive tract of land.</i>	√	The open grassed area is approximately 15m x 15m and the tapering sloped area is approximately 18m long ending in a point at the Torville Drive side at the rear garden to No 1 Plover Drive.
Recommendation		Suitable for Local Green Space Designation

Pictures:

DECEMBER 2018

The open grassed area at the corner



Open space & overgrown



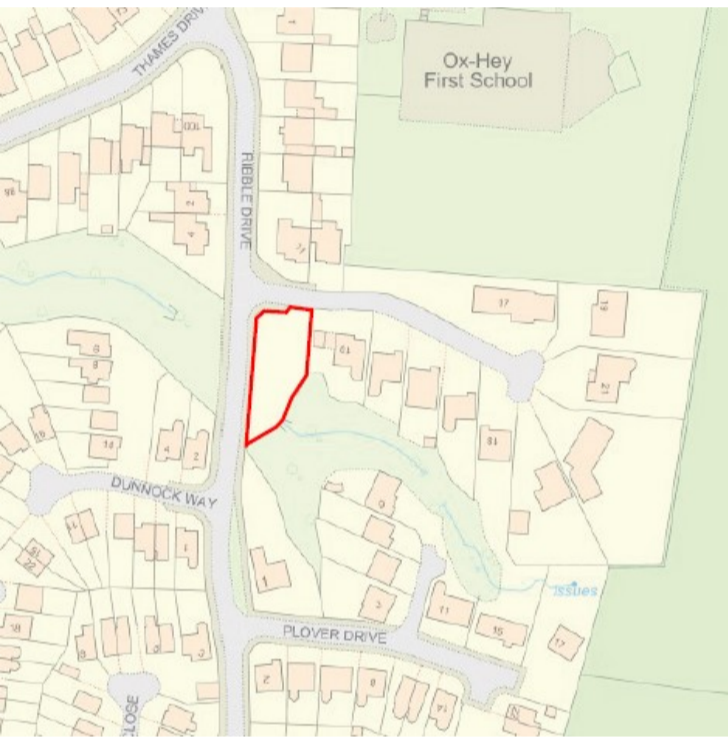
Torville Drive side tapering away



Drop down to the culvert, with blackberry brambles



MARCH 2019



Culvert